

# Gilkes Industrial Pumps



## **LSM Series**

**PERISTALTIC PUMPS**



# Application

LSM's hose pumps have a wide range of applications in a number of different industries including:

- Sewage treatment plant
- Combined heat and power plant
- Fishing industry
- Meat plants
- Chemical industry
- Food industry
- Off-shore Pulp and Paper plants
- Cement Transfer
- Pharmaceutical industry
- Brewing
- Mining
- Ceramics

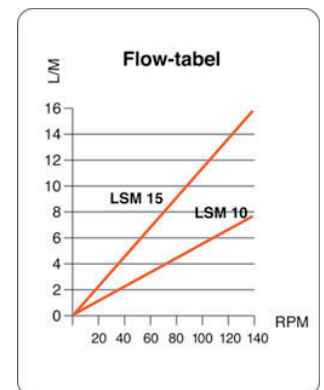
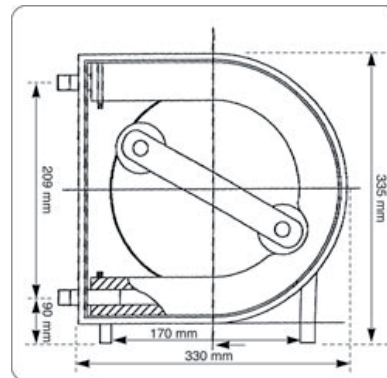


## Products

### LSM Line 2000

**Metering hose pumps in synthetic material:**

- Pump casing in synthetic material
- Bracket in stainless steel
- Connections in stainless steel/BSP thread
- Capacity 0 – 500 l/h
- Working pressure up to 10 bar
- Temperature max. 70°C
- Motor output 0.12 – 0.75 kW
- Hose dimensions (internal)  $\varnothing 10$  and  $\varnothing 15$  mm
- 6 types of hose material – natural rubber is standard



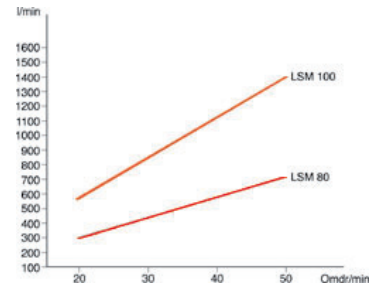
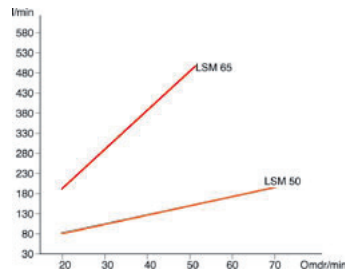
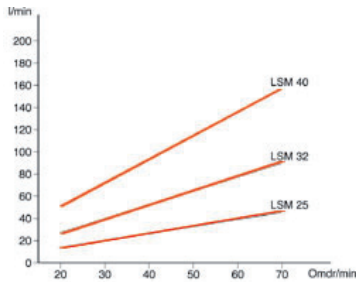
### LSM Line 2000 C

**Steel hose pumps:**

- Pump casing in steel/stainless steel
- Supporting frame in stainless steel (NB. 100mm hose size - supporting frame is galvanised steel)
- Connections in stainless steel
- Capacity 500 – 50,000 l/h
- Working pressure up to 15 bar
- Temperature max. 70°C
- Viscosity 1 to several thousand mPas
- Hose dimensions (internal)  $\varnothing 19$ ,  $\varnothing 25$ ,  $\varnothing 32$ ,  $\varnothing 40$ ,  $\varnothing 50$ ,  $\varnothing 65$ ,  $\varnothing 80$  and  $\varnothing 100$  mm
- 6 types of hose material – natural rubber is standard



## LSM Line 2000C performance curves



## LSM Big Flow

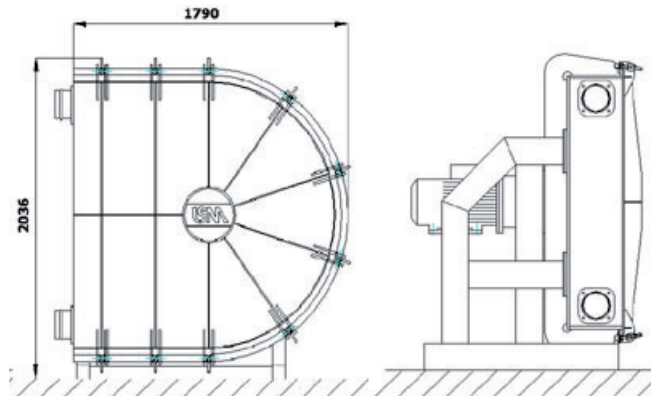
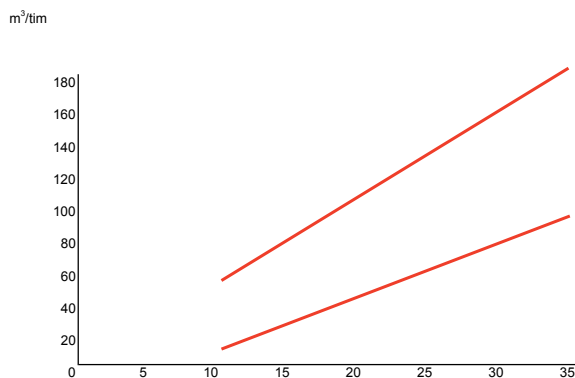
### Steel hose pumps:

- Pump casing in galvanised steel
- Supporting frame in galvanised steel
- Connections in stainless steel
- Capacity 50,000 – 150,000 l/h
- Working pressure up to 15 bar
- Temperature max. 70°C
- Viscosity 1 to several thousand mPas
- Hose dimensions (internal) 125mm - ø150 mm (NB. New option of hose dimension of 125mm producing 80m<sup>3</sup>/hr)
- 6 types of hose material – natural rubber is standard



### LSM Big Flow performance curve and size

FLOW TABLE: LSM 125, 150



## Benefits

- Abrasion resistant
- Dry running
- Self priming
- Accurate and repeatable dosing performance
- Can pump high SG liquids
- Low maintenance costs
- Gentle pumping action
- Easy to install

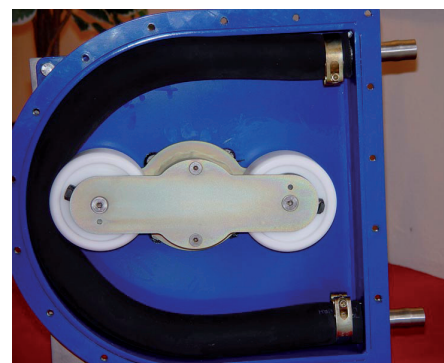
## Benefits of using Rollers

The LSM pump is slightly bigger than most other peristaltic pumps. This is to ensure the rollers are in contact with the hose for a longer period of time. This gives the benefit of a larger flow and reduced power for the same performance of an equivalent size alternative pump. The additional benefit to this is a greatly increased hose life.

The rollers compress the hose and rotate gently to keep frictional drag to a minimum which is where the reduction in hose wear comes from. Other manufacturers fit a smaller roller or static shoes which dramatically increases the effects of friction on the hose.

A further benefit from using our LSM pump is that we can run the pump at much slower speeds to achieve the same flowrate. The pump hose life is directly related to the speed of the pump. These rollers are in contact with the hose for a longer period and hence increase hose life through a greater flowrate at a lower rpm.

Examples have shown that we can run the LSM pump at half the speed of competitors pumps and achieve the same output. This creates up to twice the expected hose life and uses up to half the power consumption.



**PUMPING SYSTEMS**  
**GILKES**

## Industrial Pump Sales

**Wilf Curwen**  
(office based)  
t: 01539 790093  
e: w.curwen@gilkes.com

**Stuart Bold**  
(Key Account Manager - North)  
m: 07967 461619  
e: s.bold@gilkes.com

**Alan Cooper**  
(Key Account Manager - South)  
m: 07967 461621  
e: a.cooper@gilkes.com

**Adrian Slack**  
(Key Account Manager - Scotland & Ireland)  
m: 07967 461617  
e: a.slack@gilkes.com

## Industrial Pump Spares

**Christine Taylor**  
(office based)  
t: 01539 790091  
e: c.taylor@gilkes.com

**David Smith**  
(office based)  
t: 01539 790022  
e: d.smith@gilkes.com

## Gilbert Gilkes & Gordon Ltd

Canal Head North  
Kendal, Cumbria  
LA9 7BZ t 44 1539 720028 f 44 1539 732110  
e pumps@gilkes.com